

# LOGSTOR FlextraPipe<sup>®</sup>

LOGSTOR AluFlextra



# LOGSTOR AluFlextra

The service pipe in AluFlextra consists of an aluminium core coated with PE-RT on the inside and outside. The multilayer service pipe makes full use of the benefits of the plastic smooth surface and the stability of metal. The aluminium core also makes the pipe 100% impervious to diffusion of oxygen and water vapor.

The continuous operating parameters of 80-95°C and 10 bar make AluFlextra a robust solution for both community- and district heating.

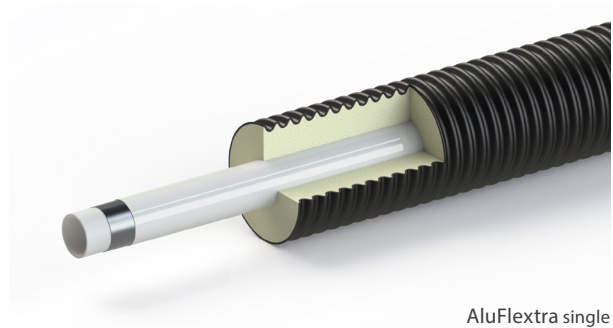
AluFlextra is available in single and twin pipe configurations, and the system includes all the couplings, joints, fittings and tools needed to establish a complete pre-insulated piping network.

FlextraPipe® is a complete range of diffusion tight, flexible pre-insulated pipe systems for community heating projects and district heating branch pipes. The corrugated outer casing and the soft foam insulation provide a unique degree of flexibility. The lowest possible heat loss over life time is ensured with the low lambda value and the built in diffusion barrier in the casing, which ensures that the property will not deteriorate over life time.

FlextraPipe® is available with two different kinds of service pipe to meet different needs and for different uses in terms of pressure and temperature. These products are named PexFlextra and AluFlextra respectively.

## Technical data

| Service Pipe                                   |   |
|--|---|
| Material                                       | PE-RT/Aluminium/PE-RT   |
| Barrier for oxygen, water, vapour and gases    | Aluminium   |
| Insulation                                     |   |
| Material                                       | Polyurethane foam (PUR)   |
| Thermal conductivity (50°C)/Lambda             | 0.022 W/mK  |
| Insulation thickness, Series                   | Series 1, 2, 3  |
| Outer casing material                          | Polyethylene (PE-HD). Corrugated, flexible surface with built in diffusion barrier (EVOH) |
| Continuous operating temperature               | 80-95°C   |
| Malfunction temperature according to EN15632-2 | 100°C (Maximum 100 hours during 30 years)   |
| Pressure                                       | 10 bar  |
| Joining method                                 | Press couplings   |
| Coils, lengths                                 | 100 metres. Customised lengths optional   |



AluFlextra single



AluFlextra twin

## Range of dimensions – service pipe/outer casing (mm)

| Single pipe |          | Twin pipe |           | Double pipe |
|-------------|----------|-----------|-----------|-------------|
| Series 2    | Series 3 | Series 2  | Series 3  | Series 2/3  |
| 20/90       | 20/110   | 20-20/110 | 20-20/125 |             |
| 26/90       | 26/110   | 26-26/125 | 26-26/140 | 26-20/125   |
| 32/100      | 32/125   | 32-32/125 |           | 26-20/140   |

LOGSTOR Denmark Holding ApS  
Danmarksvej 11 | DK-9670 Løgstør

T: +45 99 66 10 00  
E: logstor@kingspan.com



For the product offering in other markets please contact your local sales representative or visit [www.logstor.com](http://www.logstor.com)

Care has been taken to ensure that the contents of this publication are accurate, but Kingspan Limited and its subsidiary companies do not accept responsibility for errors or for information that is found to be misleading. Suggestions for, or description of, the end use or application of products or methods of working are for information only and Kingspan Limited and its subsidiaries accept no liability in respect thereof.

To ensure you are viewing the most recent and accurate product information, please scan the QR code directly above.

